



Test Report

No.: GZ0911109117/CHEM

Date: DEC 02, 2009

Page 1 of 6

YUEYANG INTECH SYNTHETIC MATERIALS CO., LTD
HUNAN YUEYANG CITY YUENXI INDUSTRY GARDEN

The following sample(s) was/were submitted and identified on behalf of the applicant as Aldehyde Resin

SGS Job No. : GC091105476
Manufacturer : YUEYANG INTECH SYNTHETIC MATERIALS CO., LTD
Date of Sample Received : NOV 24, 2009
Testing Period : NOV 24, 2009 TO DEC 02, 2009

Test Requested : A: Selected test (s) as requested by client.
B: To determine Benzene, Toluene, Xylenes emissions on the submitted sample.

Test Method : Please refer to next page(s).

Test Result(s) : Please refer to next page(s).

Conclusion : A: Based on the performed tests on submitted sample(s), the results **comply with the RoHS Directive 2002/95/EC and its subsequent amendments.**

Signed for and on behalf of
SGS-CSTC Ltd.

Manson Yang
Sr. Engineer

This document is issued by the Company subject to its General Conditions of Service printed overleaf, available on request or accessible at http://www.sgs.com/terms_and_conditions.htm and, for electronic format documents, subject to Terms and Conditions for Electronic Documents at www.sgs.com/terms_e-document.htm. Attention is drawn to the limitation of liability, indemnification and jurisdiction issues defined therein. Any holder of this document is advised that information contained hereon reflects the Company's findings at the time of its intervention only and within the limits of Client's instructions, if any. The Company's sole responsibility is to its Client and this document does not exonerate parties to a transaction from exercising all their rights and obligations under the transaction documents. This document cannot be reproduced except in full, without prior written approval of the Company. Any unauthorized alteration, forgery or falsification of the content or appearance of this document is unlawful and offenders may be prosecuted to the fullest extent of the law. Unless otherwise stated the results shown in this test report refer only to the sample(s) tested.



Test Report

No.: GZ0911109117/CHEM

Date: DEC 02, 2009

Page 2 of 6

Test Results:

A: RoHS Directive 2002/95/EC

Test Item(s)	Unit	Test Method (Reference)	No.1	MDL	Limit
Cadmium (Cd)	mg/kg	IEC 62321: 2008, ICP-OES	N.D.	2	100
Lead (Pb)	mg/kg	IEC 62321: 2008, ICP-OES	N.D.	2	1000
Mercury (Hg)	mg/kg	IEC 62321: 2008, ICP-OES	N.D.	2	1000
Hexavalent Chromium (CrVI) by alkaline extraction	mg/kg	IEC 62321: 2008, UV-Vis	N.D.	2	1000
Sum of PBBs	mg/kg	-	N.D.	-	1000
Monobromobiphenyl	mg/kg	IEC 62321: 2008, GC-MS	N.D.	5	
Dibromobiphenyl	mg/kg	IEC 62321: 2008, GC-MS	N.D.	5	
Tribromobiphenyl	mg/kg	IEC 62321: 2008, GC-MS	N.D.	5	
Tetrabromobiphenyl	mg/kg	IEC 62321: 2008, GC-MS	N.D.	5	
Pentabromobiphenyl	mg/kg	IEC 62321: 2008, GC-MS	N.D.	5	
Hexabromobiphenyl	mg/kg	IEC 62321: 2008, GC-MS	N.D.	5	
Heptabromobiphenyl	mg/kg	IEC 62321: 2008, GC-MS	N.D.	5	
Octabromobiphenyl	mg/kg	IEC 62321: 2008, GC-MS	N.D.	5	
Nonabromobiphenyl	mg/kg	IEC 62321: 2008, GC-MS	N.D.	5	
Decabromobiphenyl	mg/kg	IEC 62321: 2008, GC-MS	N.D.	5	
Sum of PBDEs	mg/kg	-	N.D.	-	1000
Monobromodiphenyl ether	mg/kg	IEC 62321: 2008, GC-MS	N.D.	5	
Dibromodiphenyl ether	mg/kg	IEC 62321: 2008, GC-MS	N.D.	5	
Tribromodiphenyl ether	mg/kg	IEC 62321: 2008, GC-MS	N.D.	5	
Tetrabromodiphenyl ether	mg/kg	IEC 62321: 2008, GC-MS	N.D.	5	
Pentabromodiphenyl ether	mg/kg	IEC 62321: 2008, GC-MS	N.D.	5	
Hexabromodiphenyl ether	mg/kg	IEC 62321: 2008, GC-MS	N.D.	5	
Heptabromodiphenyl ether	mg/kg	IEC 62321: 2008, GC-MS	N.D.	5	
Octabromodiphenyl ether	mg/kg	IEC 62321: 2008, GC-MS	N.D.	5	
Nonabromodiphenyl ether	mg/kg	IEC 62321: 2008, GC-MS	N.D.	5	
Decabromodiphenyl ether	mg/kg	IEC 62321: 2008, GC-MS	N.D.	5	

Note:

1. mg/kg = ppm
2. N.D. = Not Detected (\leq MDL)
3. MDL = Method Detection Limit
4. "-" = Not regulated

This document is issued by the Company subject to its General Conditions of Service printed overleaf, available on request or accessible at http://www.sgs.com/terms_and_conditions.htm and, for electronic format documents, subject to Terms and Conditions for Electronic Documents at www.sgs.com/terms_e-document.htm. Attention is drawn to the limitation of liability, indemnification and jurisdiction issues defined therein. Any holder of this document is advised that information contained hereon reflects the Company's findings at the time of its intervention only and within the limits of Client's instructions, if any. The Company's sole responsibility is to its Client and this document does not exonerate parties to a transaction from exercising all their rights and obligations under the transaction documents. This document cannot be reproduced except in full, without prior written approval of the Company. Any unauthorized alteration, forgery or falsification of the content or appearance of this document is unlawful and offenders may be prosecuted to the fullest extent of the law. Unless otherwise stated the results shown in this test report refer only to the sample(s) tested.



Test Report

No.: GZ0911109117/CHEM

Date: DEC 02, 2009

Page 3 of 6

B: With reference to SGS In-house method. Weight 2.0g sample to headspace bottle, then heat 1hr at 100°C in headspace instrument. Analysis by Headspace-GCMS.

Test Item(s):	Unit	No.1	MDL
Benzene	µg/g	N.D.	1.0
Toluene	µg/g	N.D.	1.0
Xylenes (all isomer)	µg/g	N.D.	1.0

Note : 1. N.D. = Not Detected (< MDL)
2. MDL = Method Detection Limit

Test Part Description:

No.1 Lt-yellow solid material

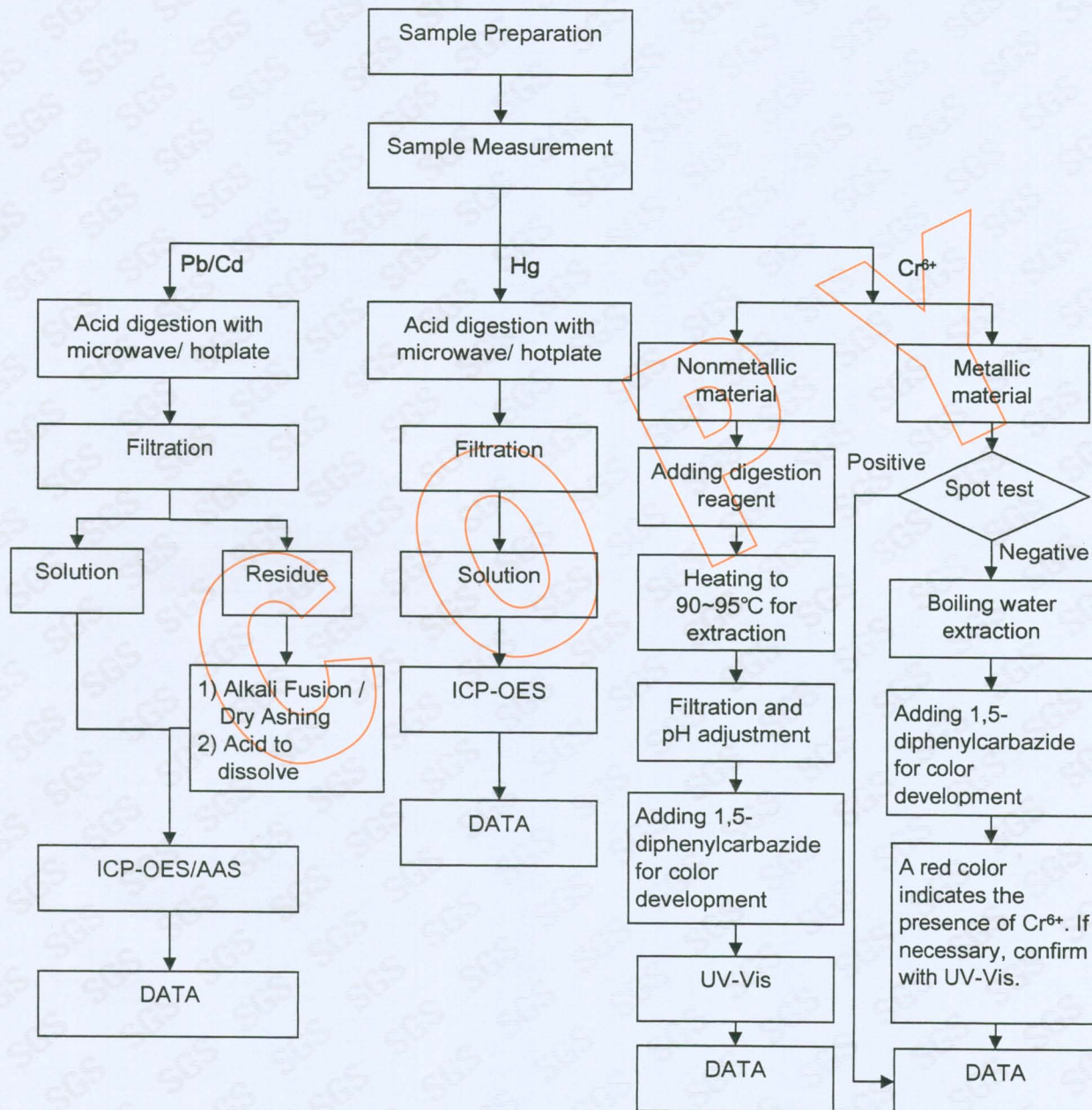
COPY

This document is issued by the Company subject to its General Conditions of Service printed overleaf, available on request or accessible at http://www.sgs.com/terms_and_conditions.htm and, for electronic format documents, subject to Terms and Conditions for Electronic Documents at www.sgs.com/terms_e-document.htm. Attention is drawn to the limitation of liability, indemnification and jurisdiction issues defined therein. Any holder of this document is advised that information contained hereon reflects the Company's findings at the time of its intervention only and within the limits of Client's instructions, if any. The Company's sole responsibility is to its Client and this document does not exonerate parties to a transaction from exercising all their rights and obligations under the transaction documents. This document cannot be reproduced except in full, without prior written approval of the Company. Any unauthorized alteration, forgery or falsification of the content or appearance of this document is unlawful and offenders may be prosecuted to the fullest extent of the law. Unless otherwise stated the results shown in this test report refer only to the sample(s) tested.

ATTACHMENTS

Testing Flow Chart

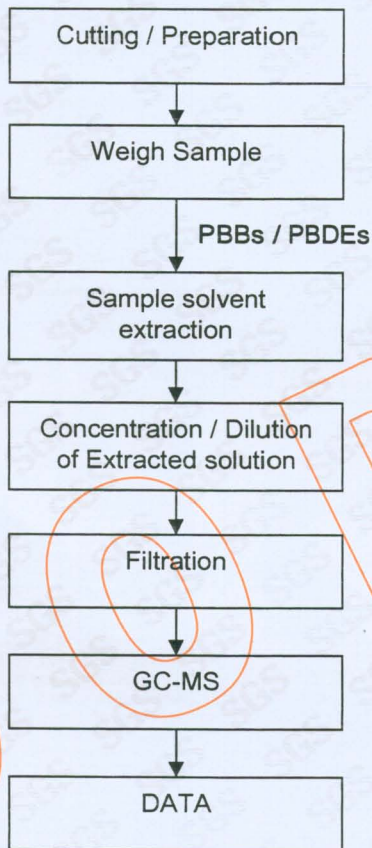
- 1) Name of the person who made measurement: Bella Wang
- 2) Name of the person in charge of measurement: Adams Yu
- 3) These samples were dissolved totally by pre-conditioning method according to below flow chart (Cr⁶⁺ test method excluded).



This document is issued by the Company subject to its General Conditions of Service printed overleaf, available on request or accessible at http://www.sgs.com/terms_and_conditions.htm and, for electronic format documents, subject to Terms and Conditions for Electronic Documents at www.sgs.com/terms_e-document.htm. Attention is drawn to the limitation of liability, indemnification and jurisdiction issues defined therein. Any holder of this document is advised that information contained herein reflects the Company's findings at the time of its intervention only and within the limits of Client's instructions, if any. The Company's sole responsibility is to its Client and this document does not exonerate parties to a transaction from exercising all their rights and obligations under the transaction documents. This document cannot be reproduced except in full, without prior written approval of the Company. Any unauthorized alteration, forgery or falsification of the content or appearance of this document is unlawful and offenders may be prosecuted to the fullest extent of the law. Unless otherwise stated the results shown in this test report refer only to the sample(s) tested.

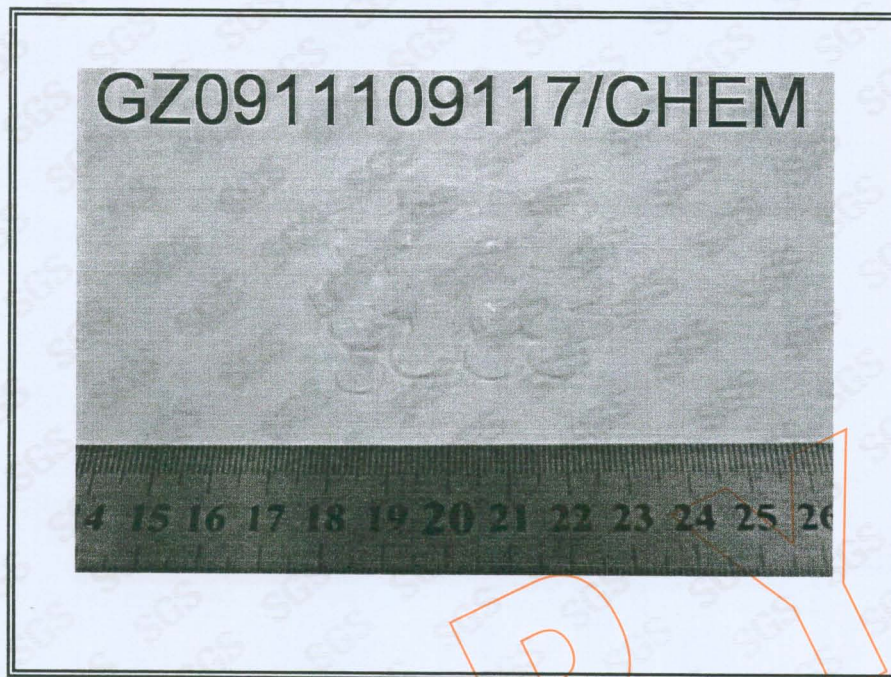
Testing Flow Chart

- 1) Name of the person who made measurement: Tina Zhao
- 2) Name of the person in charge of measurement: Ryan Yang



This document is issued by the Company subject to its General Conditions of Service printed overleaf, available on request or accessible at http://www.sgs.com/terms_and_conditions.htm and, for electronic format documents, subject to Terms and Conditions for Electronic Documents at www.sgs.com/terms_e-document.htm. Attention is drawn to the limitation of liability, indemnification and jurisdiction issues defined therein. Any holder of this document is advised that information contained hereon reflects the Company's findings at the time of its intervention only and within the limits of Client's instructions, if any. The Company's sole responsibility is to its Client and this document does not exonerate parties to a transaction from exercising all their rights and obligations under the transaction documents. This document cannot be reproduced except in full, without prior written approval of the Company. Any unauthorized alteration, forgery or falsification of the content or appearance of this document is unlawful and offenders may be prosecuted to the fullest extent of the law. Unless otherwise stated the results shown in this test report refer only to the sample(s) tested.

Sample photo :



SGS authenticate the photo on original report only

*** End of Report ***

This document is issued by the Company subject to its General Conditions of Service printed overleaf, available on request or accessible at http://www.sgs.com/terms_and_conditions.htm and, for electronic format documents, subject to Terms and Conditions for Electronic Documents at www.sgs.com/terms_e-document.htm. Attention is drawn to the limitation of liability, indemnification and jurisdiction issues defined therein. Any holder of this document is advised that information contained hereon reflects the Company's findings at the time of its intervention only and within the limits of Client's instructions, if any. The Company's sole responsibility is to its Client and this document does not exonerate parties to a transaction from exercising all their rights and obligations under the transaction documents. This document cannot be reproduced except in full, without prior written approval of the Company. Any unauthorized alteration, forgery or falsification of the content or appearance of this document is unlawful and offenders may be prosecuted to the fullest extent of the law. Unless otherwise stated the results shown in this test report refer only to the sample(s) tested.